



e-newsletter

Europe and the Middle East



European Region

(serving Europe, Middle East and North-Africa)

e-IBCLICK

August 2010

IBCLC Lactation Care Award



The International Board of Lactation Consultant Examiners (IBLCE) and the International Lactation Consultant Association (ILCA) present the IBCLC Lactation Care Award for Hospitals, Birthing Facilities, and Birthing Services. For more information please go to <http://www.ibclccare.org/>



IBLCE will be communicating with IBCLCs via emails more and more so ensure that we have your current email address so you don't miss any personal or IBCLC mailings

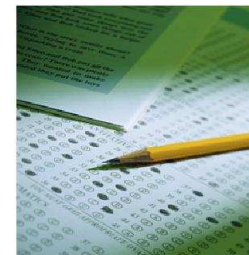
Education - Conferences/Seminars

A vital component of keeping up our knowledge and skills is attending education sessions. Did you know that CERP approved programs are advised on the IBLCE website?

Conferences and Seminars

http://www.iblce-europe.org/Other/cerps_1.htm

If you would like your program to be advertised on the IBLCE website you can by applying for CERPs. If you are interested please contact the IBLCE office for more details.



Exam Day 2010

There were 1001 exam candidates who sat the exam on 26 July 2010 in Europe and the Middle East and over 4200 candidates worldwide.

The exam was offered in
British English
American English
Dutch, German, French,
Italian, Spanish, Croatian,
Polish, Slovenian
and Portuguese
in Europe and the Middle East this year.

Exam results will be posted in the mail and on the IBLCE in Europe website on **29 October 2010.**

If you sat the exam this July make sure you have got your webcode ready as we have provided for you in the exam admission letter in June so you can check your exam result on 29 October.

www.iblce-europe.org

Are you due to recertify this year?

Two months to go to recertify by CERPs for 2010

IBLCE has sent reminder letters and forms for the application for recertification to all IBCLCs who are due for recertification in 2010. In a few days, on **31 August 2010**, the second deadline for submitting applications for recertification by CERPs will come up.



On **31 October 2010** will be the last day to put your documents in the post to IBLCE. Please consult the [IBCLC Handbook](#) for complete information. In addition IBLCE Country Coordinators and the IBLCE Office in Austria staff are available for any further questions you may have.

Exam Applications for first time candidates

MILCC

All exam applications must be complete at time of application. This means that all exam applicants **MUST** meet the minimum requirements at time of application.



No incomplete applications will be accepted

2011 exam application forms will be available as of November 2010.

All information can be downloaded from the IBLCE website www.iblce-europe.org

Recertification by CERPs in 2012

Beginning 2012 there will be only two deadlines to recertify by CERPs - end of February and the final deadline by end of July.

Recertification by CERPs

Early Bird - February
Full Fee - July

The dates for recertification by **exam** will remain unchanged:

Recertification by Exam

Early Bird February
Discount - March
Full Fee - April

This change will take effect from 2012.

2012 Exam Eligibility Requirements for first time exam candidates

The IBLCE Board of Directors has revised the exam eligibility requirements for first-time certification candidates. The revisions reflect the commitment by the IBLCE Board of Directors to enhance the quality of the International Board Certified Lactation Consultant (IBCLC) credential.

In 2012, all **first-time candidates** will be required to have completed the following education and clinical practice experience **prior to applying for the exam**:

90 hours of pre-exam education in human lactation and breastfeeding

And

Meet **ONE** of the following requirements

Be a registered/licensed/recognised health professional in their country
OR

Have completed both of the following general education requirements:

§ 8 general education courses of one semester or equivalent, in length

§ 6 additional continuing education subjects

Monetary Investment for Lactation Consultant Certification

MILCC Supports many exam candidates world wide

Get an IBLCE pin and support MILCC



or obtain the year specific pin



For any donation over \$ 10 receive a 'Friend of MILCC' pin

Why not buy one for a colleague as a gift?

You can order them by contacting MILCC

Thank you to all IBCLCs who have donated to MILCC, your donation will support other IBCLC candidates.

And

Clinical breastfeeding practice hours

The IBLCE is continually reviewing and improving the IBCLC credential. As an integral component of this process, evidence necessitated that the education requirements of all first time exam candidates be enhanced.

All eligibility criteria are considered to be minimum requirements. Based upon the individual's training and background, additional coursework or lactation specific clinical practice hours may be needed to successfully complete the examination. IBLCE acknowledges that most health professionals will have studied the general education requirements within their professional training. The education requirements are enhanced to ensure that all IBCLC exam candidates are well educated and prepared to provide quality care.

2012 Exam Eligibility Requirements for first time exam candidates

Please Note: Prospective IBCLCs who are planning to take the IBLCE certification exam in 2011 are not expected to meet these new requirements. The requirements for 2011 will stay the same as in 2010.

If you need to ask any questions or have concerns about your certification please contact me, or your local [Country Coordinator](#).

Warm Regards,

Ilse Bichler
Regional Director
IBLCE Europe
office@iblce-europe.org

Forward email

 **SafeUnsubscribe**®

This email was sent to annautter@iblce.org by office@iblce-europe.org.
[Update Profile/Email Address](#) | Instant removal with [SafeUnsubscribe](#)™ | [Privacy Policy](#).



Have you moved house lately?

Does IBLCE have your current contact details and email address?

If the answer is no please email the office and update your details

Email Marketing by



IBLCE Europe | Steinfeldgasse 11 | 2511 Pfaffstätten | Austria